



**Healthy London
Partnership**

London Older Adult Clinical and transformation Group - Community Mental Health Transformation

overview

Supported by and delivering for:



Public Health
England



SUPPORTED BY
MAYOR OF LONDON

London's NHS organisations include all of London's CCGs, NHS England and Health Education England

Overview and membership

HLP London Programme - what are we trying to achieve?

- The Community MH Framework for Adults and Older Adults sets out a **new approach to providing place-based integrated support, care and treatment in the community** for adults and older adults with serious mental illness (SMI) whatever their level of need.

Healthy London Partnership (HLP) London MH Transformation Programme are helping to support London ICSs to develop robust models of community mental health transformation.

We have established **a Community of Practice (CoP) to bring together London's mental health leaders** to:



maximise learning by sharing differing perspectives, knowledge and expertise, share collective challenges and work through barriers within different high level themes (such as workforce, older adults etc).

The overarching CoP membership includes provider, commissioner and London ICS strategic, system and transformation leads. As we develop we will also form sub-groups focused on specific themes.

N.B The 'Older adult' population includes those with functional mental health problems who may have co-existing cognitive issues or dementia as well as other coexisting health issues such as frailty or substance use.

Establishing a London Older Adult Clinical Group

The overarching Community of Practice (CoP) have identified 'older adults' as a priority area to share learning across London. We have established a clinical sub-group of the CoP focused on older adults within community MH transformation.

The Community MH Framework for Adults and Older Adults looks at how care can be provided to meet complexity of need. "Older adults may have differing types of needs and therefore may require support in different ways to meet these needs" (Community Framework, Part 1, pg 26).



This Older Adult Clinical Group will aim to:

- Strengthen older adult clinical leadership/ input into the community MH transformation.
- Support peer-to-peer learning and share good practice/ challenges wherever relevant across London.
- Feed into the wider CoP and other networks (including NHSE/I) on key priorities/ challenges.

Establishing an older adult clinical and transformation group across London



There is clinical representation across all five ICSs in London - and nine MH Trusts. Clinical leads are either consultant psychiatrists or psychologists and transformation/ operation leads working in older adult services.



The group is chaired by **Dr Mohan Bhat**

Associate Medical Director (Barking & Dagenham) & Consultant Old Age Psychiatrist, North East London Foundation Trust.



The group works closely with the NHSE/I regional and national team to ensure that it aligns with policy and guidance. Different NHSE/I colleagues are invited to some meetings dependent on the meeting topic. HLP colleagues meet regularly with NHSE/I leads outside of OA meetings to update and share information.

For a full list of membership see the [appendix](#).

Key areas of focus for 2021- 22

Priority areas



Co-production

The group is developing a business case that will describe the value of older adult and carer non-clinical roles (e.g. peer support workers or link workers). Wider work will aim to support clinical and transformation teams to strengthen the overall involvement of older people and carers with lived experience to ensure that it is meaningful.

Output

- Establish a London OA/carers co-production advisory group that will develop resources to strengthen involvement.
- Develop a business case that reviews existing roles drawing out good practice learning and make the case to strengthen roles.



Needs based criteria

Developing a proposal for what a needs-led service would look like for Oas within community MH transformation. This work will explore the specific needs of Oas to ensure that services are based on need and not only on a person's age. It will also consider how the model can be simplified to provide unnecessary repeat assessment and referrals, take into account workforce needs including specialist and generalist roles as part of a core community MH transformation team and ensure that it is aligned to the Ageing Well agenda and other related policies.

Output

- Review the OA MH competency framework and provide recommendations to generalist and speciality staff.
- Develop a needs led proposal including a needs matrix for low, medium and high needs.
- Develop a referral diagram that describes the referral points and steps in the process.



Advice & information platforms

Understanding how to build the uptake of advice and guidance platforms (e.g. Consultant Connect) for GPs and non specialist staff to ensure that they have the knowledge and understanding of OA needs. This work will include considerations around methods of engagement to improve uptake.

Output

- Survey clinical teams to understand how to best engage and improve use of advice platforms. Provide recommendations to strengthen its use across London.

Meeting structure

Community of practice principles

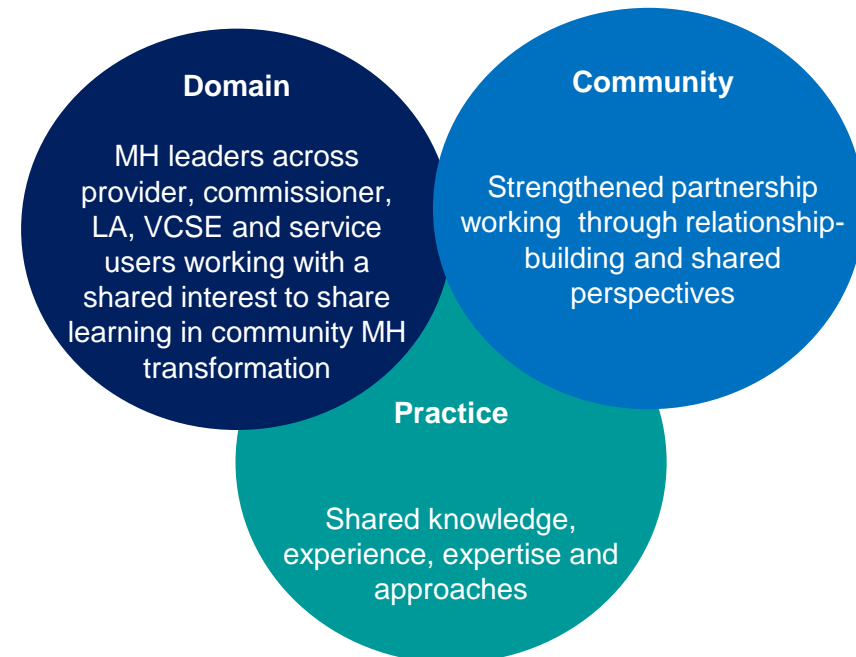
A fundamental element and key success of this work is that it uses community of practice principles-working on the basis of learning.

- An important element of this requires members to be actively involved and willing to share work in their area- this includes good practice but often requires the group to share learning on tricky challenge that do not have immediate solutions and participate in collective problem-solving.
- The HLP team works closely with senior MH leaders working in CMH transformation to understand the biggest priorities and challenges of the system and shape the programme workstreams on this.



The overarching purpose of the CoP subgroups meetings are to:

- Strengthen MH leadership across London
- Troubleshoot challenges and barriers to implementation
- Share learning to strengthen delivery of community MH transformation



Meeting structure and approach



The first meeting was used to share older adult community MH transformation models across each area including successes, challenges and priorities from which the group agreed priority areas of focus for the next financial year.



- Each meeting focuses on a priority area where presenters are invited to share learning and good practice.
- For example at the meeting focused on co-production people with lived experience were invited to share learning from their Trust approach and highlight any key challenges.
- Advisory group meetings run alongside the main meetings and include reps from the core group + some expert roles.
- Advisory groups generally focus on helping HLP to shape and develop pan-London resources and clinical guidance.



The older adult group runs alongside a wider London Community MH Transformation CoP focused on other topics such as outcome measures and physical health, with the appropriate leads in those areas. Wherever relevant older adult group members are invited to take part or present at these forums/meetings to share learning across themes/ expert groups.

See next slide for governance structure

Governance structure

CoP members choose which areas they want to focus on- we ask each Trust lead to support at least on area and support us to bring in their colleagues who are experts in this area. Leads can support work that they are currently working on in their Trust or is a priority area and in turn are able to help other Trusts to share the workload.

London CoP stocktake meetings
Purpose: Oversight, stocktake review priorities
Chair: Dr Michael Holland

London Community MH Programme Board
Chair: David Bradley & Tonia Michaelides

London Older Adult Working group
Purpose: share approaches to needs based service in OA CMH Trans
Chair: Dr Mohan Bhat, NELFT



This sits alongside other themed working groups as part of the community of practice network on community MH transformation

Co-production advisory group made up of clinical, people participation expert leads and people with lived experience

Needs-led advisory group
TBC

Advice and information advisory group
TBC



Advisory groups are established to develop priority theme resources and include core members from the OA group and expert colleagues based on the theme

Community of practice London Future Platform space- to share learning, information etc



The group has an [NHS Future Platform site](#) managed by HLP where members can share information across London outside the meeting. The platform includes meeting content, resources developed by the group, discussion forum and links to wider policy information/groups.

Appendix

Membership

NEL - INNER

Dr Waleed Fawzi	Trust Lead for Mental Healthcare of Older People, ELFT
Georgina Birch	Operational Lead for the Integrated Care Mental Health Liaison Team in Tower Hamlets, ELFT
Dr Kapila Sachdev	Consultant Old Age Psychiatrist, ELFT
Dr Azad Cadinouche	Consultant Psychiatrist and Associate Medical Director and Clinical Lead, Newham, ELFT
Dr Leah White	Consultant Old Age Psychiatrist, Tower Hamlets, ELFT

NEL - OUTER

Dr Mohan Bhat (Chair)	Associate Medical Director (B&D) & Consultant Old Age Psychiatrist, NELFT
Dr Saheem Gul	Consultant Psychiatrist & Associate Medical Director, NELFT
Dr Stephen O'Connor	consultant in old age liaison psychiatry and Associate Medical Director for QI, NELFT

NWL

Dr Guy Harman	Deputy OA Lead Consultant Clinical Psychologist and Hillingdon OA Lead Consultant Clinical Psychologist, CNWL
Ed Austin	Senior Transformation & Strategy Lead, CNWL
Faye Rice	Associate Director of Strategy, System Transformation & Partnerships, CNWL
Dr Anita Kulatilake	Lead Psychiatrist for Older Adults - KCW, CNWL
Neetika Mahan	Director of Transformation, WLMHT
Dr Neville Cheesman	Consultant Psychiatrist, WLMHT
Gillian Saracino	Transformation Project Manager, WLMHT
Dr Rajendra Shah	Consultant Psychiatrist and Clinical Lead, Older People's Mental Health Service, WLMHT
Melanie Barlow	Community Service Manager, WLMHT
Dr Sarah Ghani	Consultant Clinical Psychologist, WLMHT

NCL

Dr Andrew Crombie	Consultant Old Age Psychiatrist, CANDI
Dr Suzanne Joels	Consultant Psychiatrist and Clinical Director for Ageing and Perinatal Mental Health, CANDI
Dr Lucy Wright	Consultant Old Age Psychiatrist and clinical lead for OA, CANDI
Alan Beaton	Senior Service Lead, Enfield Mental Health Services for Older People, BEH
Dr Adam Clare	Senior Medical Trainee, BEH

SEL

Dr Sian Critchley-Robbins	Consultant Psychiatrist, Oxleas
Dr Jo Cook	Consultant Clinical Psychologist, co-chair - South Thames branch of the Faculty of Psychologists working with OA, Oxleas
Paddy Quinn	Head of Service Development, SLaM
Nicola Gower	Older Adults General Manager, SLaM
Peter Ocansey	Consultant Psychiatrist, Medical Lead - Older Adults, SLaM
Dr Natasha Newbery	Principal Clinical Psychologist and Community Lead, Psychology & Psychotherapy Service for Older Adults, SLaM

SWL

Dr Lola Velazquez	Consultant Psychiatrist and Clinical Director for Older adults services at SWLSTG
Beata Mougey	Associate Clinical Director, SWLSTG



If you would like to find out more about this work or would like to find out how you can be involved please contact Tim Hess, Community MH Transformation Project Officer at HLP – tim.hess@nhs.net



The group has an [NHS Future Platform site](#) managed by HLP where members can share information across London outside the meeting. The platform includes meeting content, resources developed by the group, discussion forum and links to wider policy information/groups. If you would like to access the site, please contact Tim at the above address.