

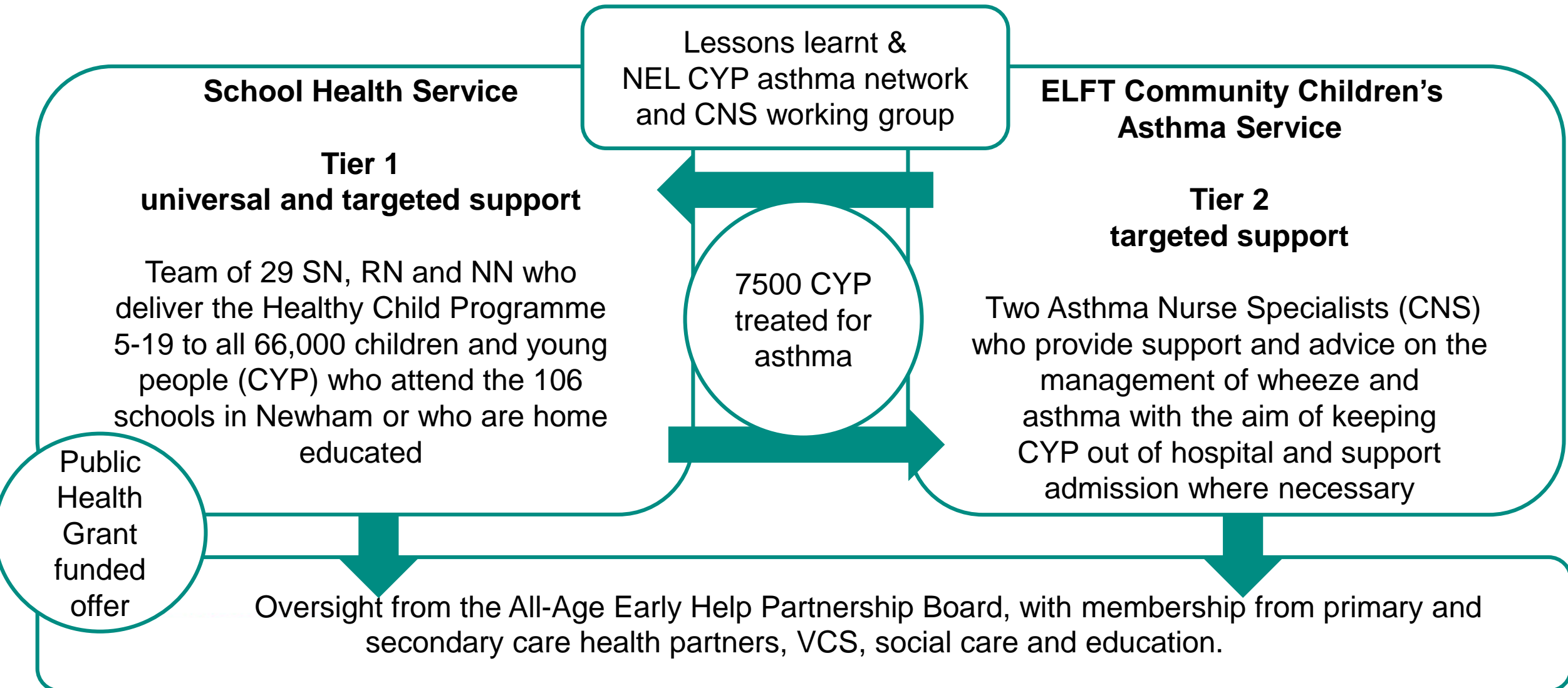
Whole School Asthma Approach

School Health Service (Children's Health 0-19
Service) and ELFT
Heather Robinson

WE ARE NEWHAM.



PARTNERSHIP WORKING AND GOVERNANCE



ASTHMA CONTEXT

Most
common
childhood
condition
globally

1 in 11 CYP
in the UK = 3
per class of
30


Several CYP
die every year
in London from
asthma



Everyone with
asthma should have
a personalised
asthma action plan
(PAAP) provided by
their GP, hospital or
asthma clinic

4 times less
likely to have
a
hospitalisation
if PAAP is
used!

Most CYP with long term conditions, including all CYP with asthma, require an individual health care plan at school to help ensure schools effectively support them (DFE, 2015).



School Health Service profiled all schools this included an asthma audit

- Underreported number of known CYP with asthma
- 120 staff trained across all schools
- 39% did not have an asthma policy
- 41% did not have spare inhalers in school
- Children without spacers – importance not understood

- Children who were GP managed (97%) unlikely to have a PAAP
- Had become custom for schools to refer to School Health to complete
- Accounted for 39% of referrals into School Health
- Schools completing their own plans (not evidenced based)

SCHOOL HEALTH & COMMUNITY CHILDREN'S ASTHMA SERVICE

Annual SN hours in establishment = 31,646

Activity	Asthma	CYP with SG plans	Totals
Number of CYP	7500	972	8472
% CYP	11%	1%	13%
Hrs per CYP annually	1.5	18	19.5
Total hrs annually	11250	17496	28746
% time spent	36%	56%	91%
Cost	£225,112.50	£350,094.96	£575,207.46

Clinic
approx.
250
CYP

Specialist asthma knowledge
Week 38 spike annually
COVID-19
Unnecessary referrals
Asthma exacerbations not being picked up
Parents/carers lacked confidence in schools

CYP
without PAAPs!
Staff burnout
Service reputation
Requests for more training

Public Health
Prevention
A&E notifications
Growth checks
Immunisations
Hearing and vision
EHWB
Health assessments
Health Promotion
Bereavement support
Young Carers
ChatHealth
Referrals and signposting
Long term health conditions
Health needs training
Events
Drop-ins

9%



CHILDREN AND YOUNG PEOPLE

“It would be really handy if they did more awareness raising campaigns in school, where medical staff go into the school and teach about asthma and support young people with it. Asthma support and information shouldn’t just be about the person. Everyone will have a family member or close friend with asthma, so we need to teach this in school so everyone has a better understanding.” HLP (2021)



WE ARE NEWHAM.

Refocus role of
SN

Every CYP have
written asthma
guidance

Improve
nurses'
asthma
knowledge

100% AFS

Improve
outcomes
for
children
and young
people
with
asthma
and
wheeze



Increase asthma
awareness

Focus on most
in need

Reduce referrals
into asthma
clinic

Improve quality
of referrals

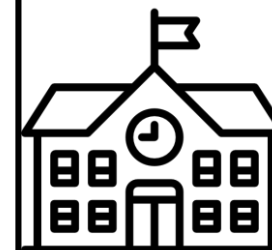
WE ARE NEWHAM.

40
Asthma
Champions

800%
increase in
training offer

Suite of asthma
training films made
with CYP from LBN

Co-created
universal
asthma
action plan



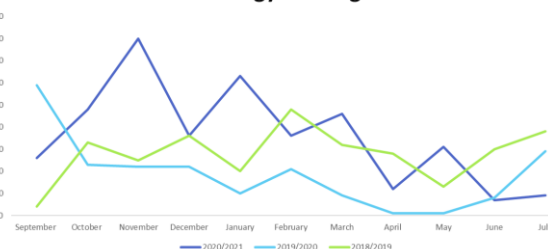
Co-produced an
asthma & allergy
recommendation
document for
schools

Addressed
Coroner's
recommendations

99%
increase



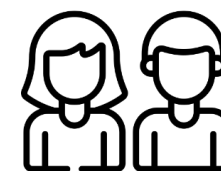
Attendance at Management of Asthma and
Allergy training



95%
of schools
taking part



£28.60
cost saving
per CYP



= £214,500

98%

v. satisfied or
satisfied with
training



One of
the top
AFS
borough
in London

10,716
SN hours saved



Academic year	Referrals	Asthma referrals	%
2019 / 2020	756	296	39%
2020 / 2021	953	129	14%
2021 / 2022	862	90	10%

56% reduction in
asthma referrals

4000+
trained in asthma
awareness



46%
no asthma
training
prior

LGC AWARDS

WE ARE
ASTHMA
FRIENDLY.

Newham London



LGC Awards
2022
FINALIST

Won 'Highly Commended' in the
Public / Public Partnership Award.

Next steps

Asthma Friendly Leisure Centres!

WE ARE NEWHAM.



- Asthma kit
https://youtu.be/pfaG_Rz5CwQ
- Washing a spacer
<https://youtu.be/NblqBgmfTFE>
- What it feels like to have asthma
<https://youtu.be/ZNvqMDpfFQs>
- Living with asthma
<https://youtu.be/OyOdu7hAjL0>
- Whole school asthma approach
<https://youtu.be/l1J4cTwMev0>

WE ARE NEWHAM.