

Peer Learning for London

“Proactive outreach and community development in the work of Social Prescribing Link Workers.”

Wed 9th March 2022



Plan for today

JOIN THE CONVERSATION



It is an informal session
– talk to each other & share
resources in the chat



The presentations will be
recorded & circulated

TIME	ITEM
12:30	Introductions
12:35	Dan Hopewell, Director of Knowledge and Innovation, Bromley by Bow
1:05	Gay Palmer – Social Prescriber Link Worker Team Lead, South Southwark PCN, Southwark Community Development
1:15	Michaela Coker, SPLW, Community development – top tips on organizing a successful community event
1:25	Arun Nadarasa – Social Prescribing future and community innovation from the Pharmacist's perspective
1:35	SPLW experiences and challenges.
2:00	Close

Overview – what will you leave with...

By the end of this session, you will be able to:

- ✓ Hear inspiring examples of the proactive outreach to certain vulnerable groups
- ✓ Increase your confidence in engaging in community development activities
- ✓ Find adequate resources to help you in your daily tasks
- ✓ Connect with SPLWs to discuss your challenges

Dan Hopewell - Bromley by Bow Centre



insights@bbbc.org.uk



[@BBB_Insights](https://twitter.com/BBB_Insights)



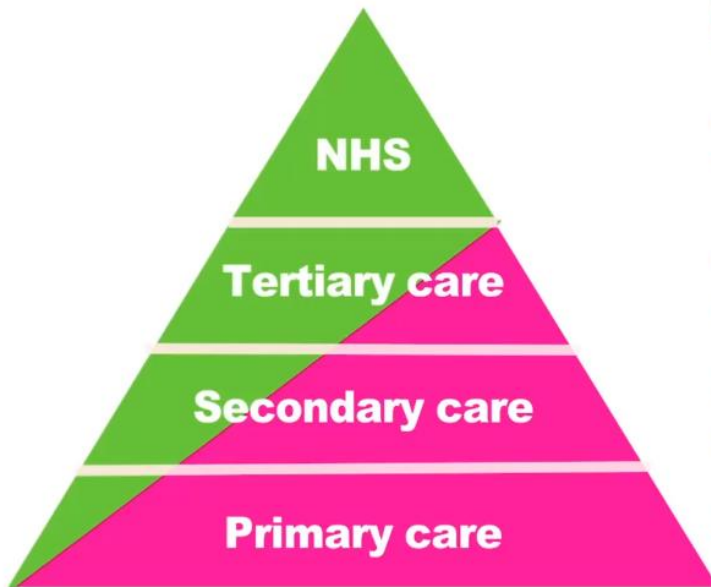
www.bbbc.org.uk

PEER LEARNING FOR LONDON: PROACTIVE OUTREACH AND COMMUNITY DEVELOPMENT
IN THE WORK OF SOCIAL PRESCRIBING LINK WORKERS

Dan Hopewell - Bromley by Bow Centre



PEER LEARNING FOR LONDON: PROACTIVE OUTREACH AND COMMUNITY DEVELOPMENT
IN THE WORK OF SOCIAL PRESCRIBING LINK WORKERS



Rethinking care

Care accessed through the NHS

Care accessed in communities

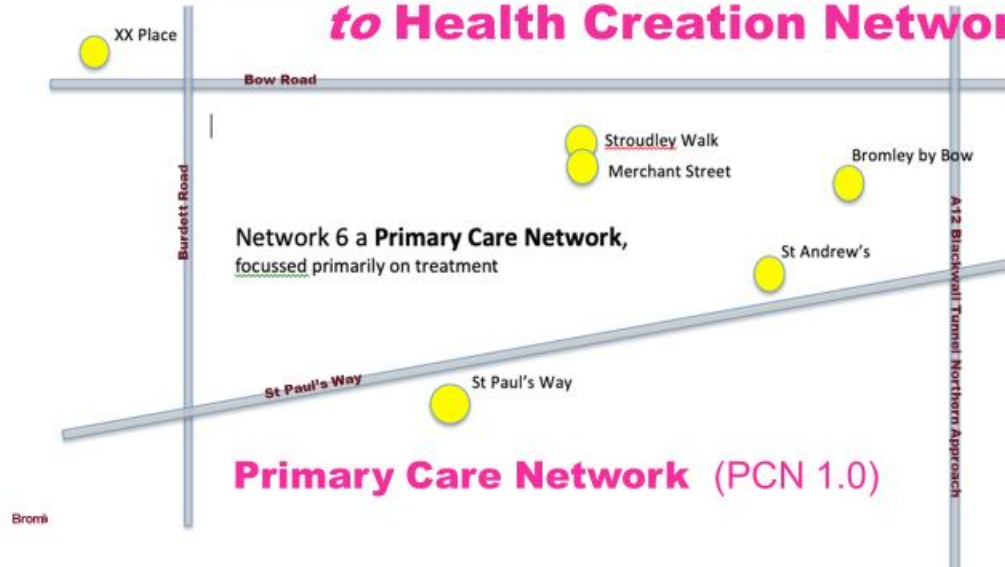
Care provided by family and friends

Self care, your choices

***does the advent of Integrated Care Systems and Primary Care Networks create an opportunity to rethink care?**

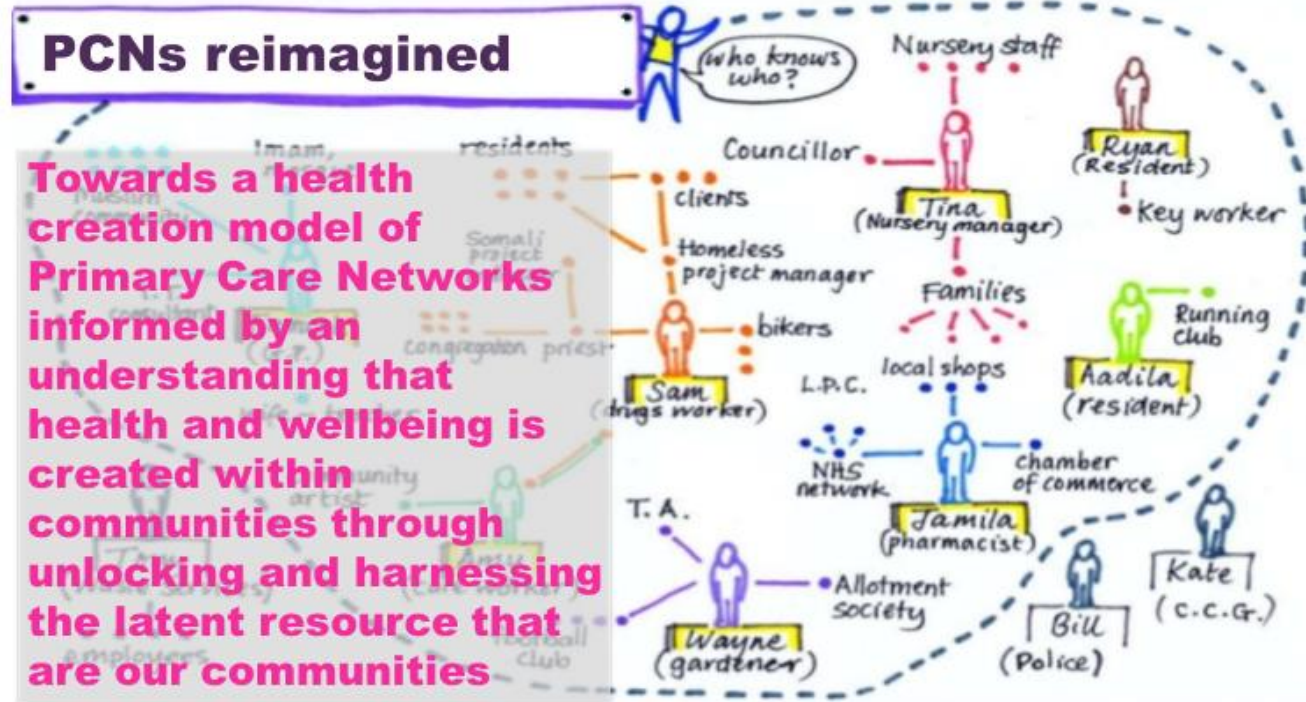
Dan Hopewell - Bromley by Bow Centre

Next steps from Primary Care Networks to Health Creation Networks



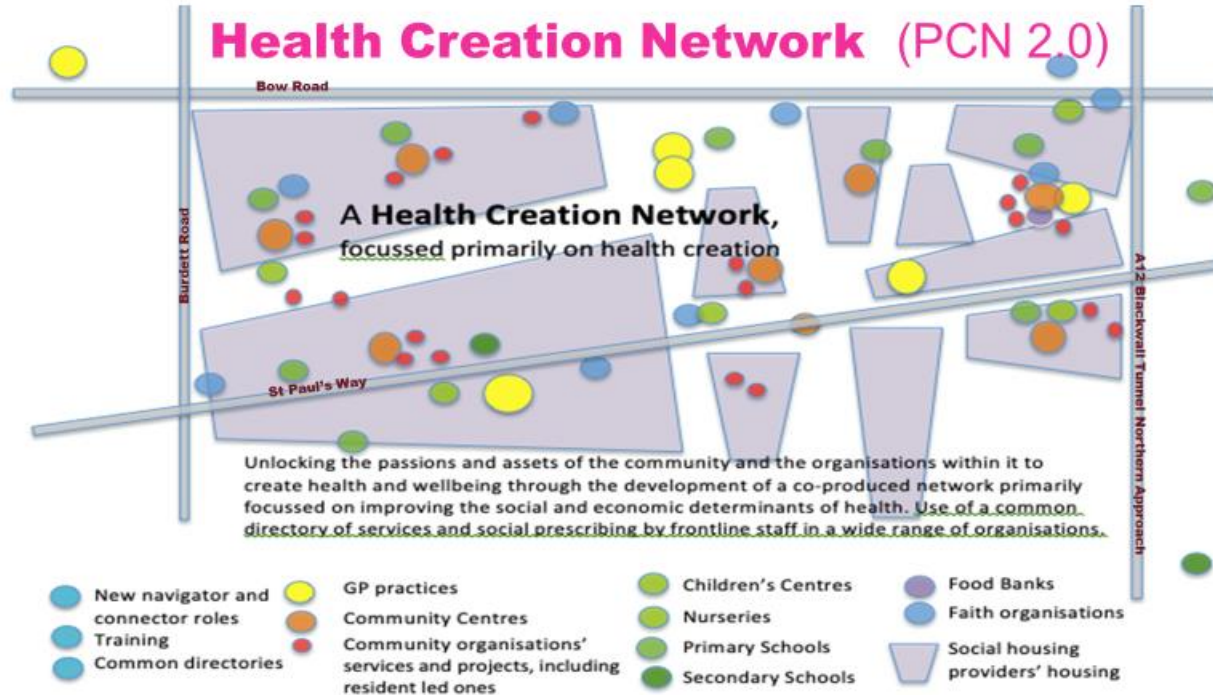
PEER LEARNING FOR LONDON: PROACTIVE OUTREACH AND COMMUNITY DEVELOPMENT
IN THE WORK OF SOCIAL PRESCRIBING LINK WORKERS

Dan Hopewell - Bromley by Bow Centre



PEER LEARNING FOR LONDON: PROACTIVE OUTREACH AND COMMUNITY DEVELOPMENT
IN THE WORK OF SOCIAL PRESCRIBING LINK WORKERS

Dan Hopewell - Bromley by Bow Centre



PEER LEARNING FOR LONDON: PROACTIVE OUTREACH AND COMMUNITY DEVELOPMENT
IN THE WORK OF SOCIAL PRESCRIBING LINK WORKERS

Southwark Community Development



[This Photo](#) by Unknown Author is licensed under [CC BY-NC](#)

PEER LEARNING FOR LONDON: PROACTIVE OUTREACH AND COMMUNITY DEVELOPMENT
IN THE WORK OF SOCIAL PRESCRIBING LINK WORKERS

Pro Active Outreach

1

Be aware of the communities that you support

2

Identify organisations that are already established that support that community

3

Access local VCSE teams if they know of organisations that they may also link with

4

Reach out and connect. Share knowledge, journey look at ways of working together

Community Development



- Talk and connect with the organisation/team
- Carry out mapping exercise of teams that may already do this
- Discuss with them their experience
- Look at the strengths and assets of the organisation and the link worker team and how we can work together

Michaela Coker – SPLW,

Community Development is an important part of being a Social Prescribing Link Worker and often that is unfortunately forgotten.

BUT...

if you have an idea, believe in yourself as with hard work anything is possible!



PEER LEARNING FOR LONDON: PROACTIVE OUTREACH AND COMMUNITY DEVELOPMENT
IN THE WORK OF SOCIAL PRESCRIBING LINK WORKERS

Michaela Coker – SPLW,

From an idea to the event:

- Idea to host a community event at bringing together the services in Lambeth.
- Sharing my thoughts with my colleague Ollie
- Presenting the idea to the PCN Clinical Director
- After 3 months of organising collaborative work, an idea became reality 😊

On the 8th of October 2021, we launched our first-ever Autumn Community fair!

- Many patients stated that it's so nice to be able to eat, have a coffee, meet new people and learn about new services.
- We also managed to get 113 people signed up and signposted for new services due to this collaborative teamwork!
- Due to the amazing feedback we received, we have now launched #thrivingstreatham a group of multiple organizations whose ethos is working together to make the community thrive!



Arun Nadarasa - Social Prescribing Pharmacy Association

- Why Pharmacy Social Prescribing?
- How could Community Pharmacists support development of Social Prescribing in London?
- Proactive outreach:
 - SP conversations in the pharmacy settings
 - SP ALGORITHM to build evidence to NHS - ProScript Flags Patient as suitable for SP Referral using different criteria, e.g.:
 - Patients on regular antibiotics
 - Patients on income support
 - Patients on anti-depressants
 - Patients with irregular blue inhalers usage
 - Patients with uncontrolled diabetes
 - Patients on smoking cessation
 - Patients on statins
 - Space & Metaverse Social Prescribing
- Top tips for SPLWs

3 GOOD HEALTH AND WELL BEING

PSPC2022

PHARMACY SOCIAL PRESCRIBING CONFERENCE 2022
19 APRIL 2022
19:00 - 22:00 GMT

REGISTER WITH US
WWW.SOCIAL-PRESCRIBING.COM

SPEAKERS

 Dr Jane Thomason Stockham, DPh, NPTs, Metaverse, Board Advisory Health Tech, Social Impact	 Prof. Sir Michael G. Marmot Director of the Institute of Health Equity (IGL, Department of Epidemiology & Public Health)	 Gareth Presch World Health Innovation Summit (WHIS)
 Dr Avi Mehra Associate Partner for Healthcare at IBM Co-Founder of Doctorpreneur	 Isabelle Wachsmuth Lead of an Impact For Health and SDGs Universal Health Coverage and Life course World Health Organization	 Nacho Iacovino Developer Success Engineer at thirdweb
 Prof. Thais Russomano CEO InovaSpace	 Aragorn Meulendijks CMD Your Open Metaverse (YOM)	 Jurjen Sohne CROO at BODYGEE

SPONSOR


PARTNERS


JOIN THE GLOBAL MOVEMENT AND SHARE YOUR IDEAS WITH #SOCIALPRESCRIBINGX ON @ AND 🐦

PEER LEARNING FOR LONDON: PROACTIVE OUTREACH AND COMMUNITY DEVELOPMENT
IN THE WORK OF SOCIAL PRESCRIBING LINK WORKERS

Resources

- **London Social Prescribing Toolkit** – access [here](#)
- **The Public Health Outcomes Framework** - [access here](#).
- **The Role of Social Prescribing Link Workers in Reducing Health Inequalities** – [access here](#). The document contains a lot of great case studies and examples which help to illustrate the complexity of the Social Prescribing Link Worker role.
- Prof Sir Michael Marmot on **The Health Gap: The Challenge of an Unequal World** - [watch here](#). This video explains why it's more urgent than ever that we tackle inequalities in order to improve health, why more progress has not been made in the last decade, and how we can rectify this failure in the era of levelling up.)
- **Can social prescribing help to reduce workload and address health inequalities?** – [watch here](#).
- **World Mental Health Day 2021: 'Mental Health in an Unequal World'** - download here.
- **Evaluation of a Community Health Worker Social Prescribing Program Among UK Patients With Type 2 Diabetes**. New evidence from [Ways to Wellness](#) that social prescribing interventions can improve chronic conditions and may help to address health inequalities. The full paper can be found in the JAMA open network [here](#).
- **Pharmacy Social Prescribing Conference** – sign up here.

Feedback

Thank you for participating in our *Peer learning for London: Proactive outreach and community development in the work of Social Prescribing Link Workers*. We hope you have enjoyed it and find it useful.

It would be great if you could complete this quick feedback form to let us know your honest opinions:

<https://forms.office.com/r/UL9S1wVbWJ> or



All past Peer Learning for London sessions and resources are available [here](#).

Please feel free to email us if you have any questions.

Lianna Martin: lianna.martin@nhs.net

Justyna Sobotka: j.sobotka@nhs.net