

Governance of paediatric asthma/preschool wheeze in Hillingdon

Box 1: Service to be represented

- GP Practices
- Hospital
- Urgent Care Centre
- Schools
- Health Visitors
- CYP and families representatives
- Pharmacy ^(31, 36)

Box 2: Strategic meeting to focus on

- Shared protocols and guidelines
- Regular assessment of performance
- Workforce planning
- Service improvement
- Audit programme⁽³⁾
- Development of unified IT systems for asthma⁽⁴⁾
- CYP and family feedback⁽¹⁰⁾
- Transition ^(33, 34)
- Prescribing ^(36, 37)

All organisations/services (**Box 1**) within Hillingdon borough must have a named lead responsible and accountable for asthma ⁽¹⁾

Quarterly strategic meetings (**Box 2**) with named leads to plan and deliver asthma service ⁽²⁾

CYP and families are actively involved in reviewing local services provision and giving feedback ⁽⁹⁾

This pathway is underpinned by the London Asthma Standards for Children and Young People published June 2015 to which all references relate.

<https://www.myhealth.london.nhs.uk/system/files/London%20asthma%20standards.pdf>

New presentation of possible asthma/ preschool wheeze to primary care (Non-acute)

Box 1: Asthma friendly clinic

- Named lead responsible & accountable for asthma ⁽¹⁾
- At least one practice nurse trained in asthma and holds an asthma diploma ⁽³⁹⁾
- Trained staff with appropriate training and ongoing education in paediatric asthma at least every three years ⁽³⁹⁾
- 20-30 minute clinic slots for assessment and management of each patient ⁽⁵⁾
- For each consultation access to
 - Asthma control test paperwork ⁽¹⁵⁾
 - Selection of training devices
 - Peak flow meters and diaries
 - Information leaflets
 - Signposting to supporting websites
 - Stop smoking advice/ healthy eating advice

Box 2: Structured asthma review

- Assessment of wheeze triggers ⁽⁶⁾
- Assessment of adherence ⁽²⁸⁾
- Assessment of inhaler technique ⁽¹³⁾ ⁽²⁸⁾
- Assessment of Control/ Asthma control test ⁽¹⁵⁾ ⁽²⁸⁾
- Peak flow monitoring (if applicable)
- Patient/parent understanding of condition. ⁽²⁸⁾
- Screened for comorbidities ⁽⁶⁾
- Personal written management plan ⁽²⁷⁾
- Growth monitoring

Box 3: Stop smoking advice ⁽⁷⁾

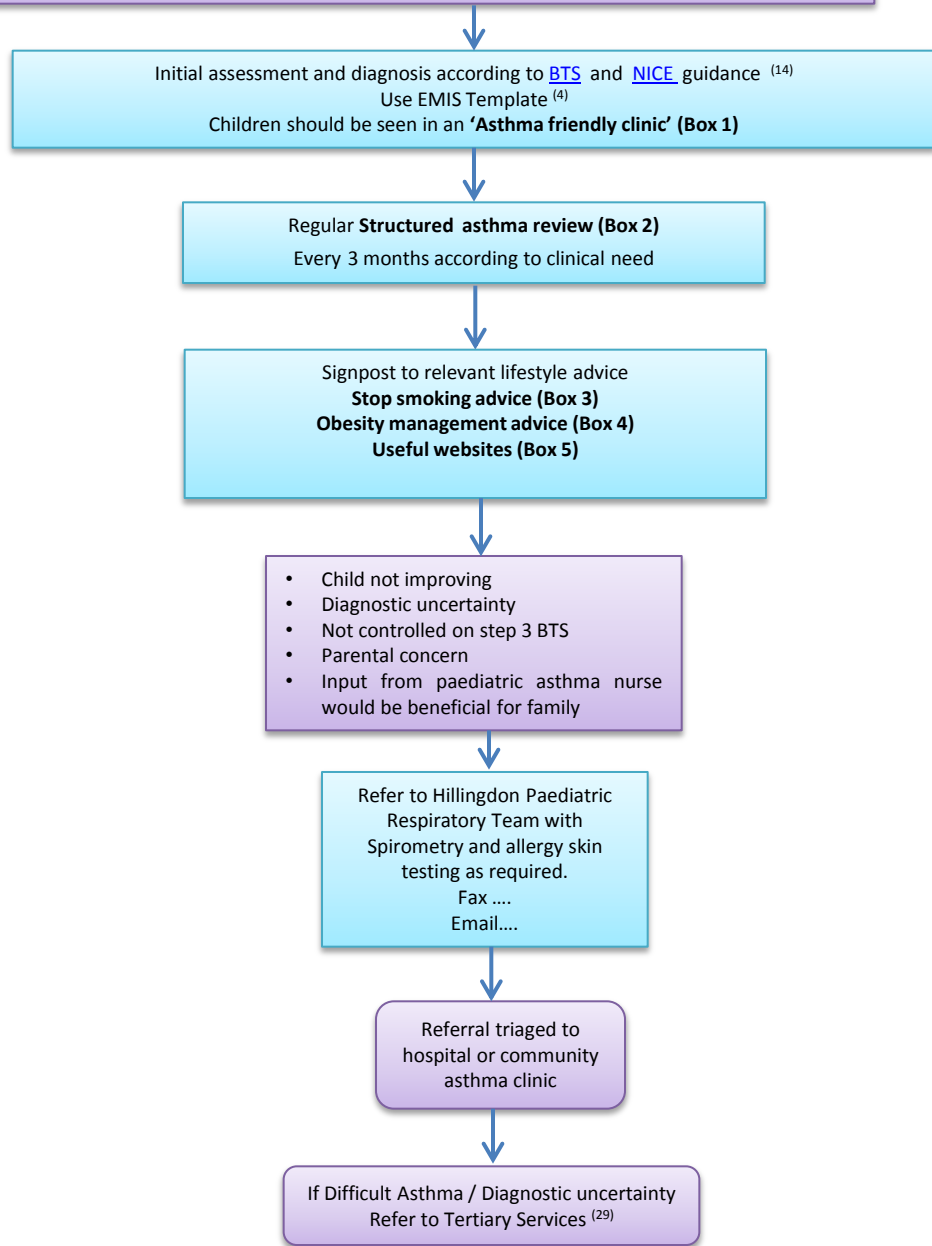
- Hillingdon.gov.uk/stopsmoking
- Call 0800 169 7541 for advice
- Drop in community clinics/pharmacy clinics
- Information leaflets to parents.
- All health professionals to undertake the [National Centre for Smoking Cessation Training of Very Brief Advice](#)

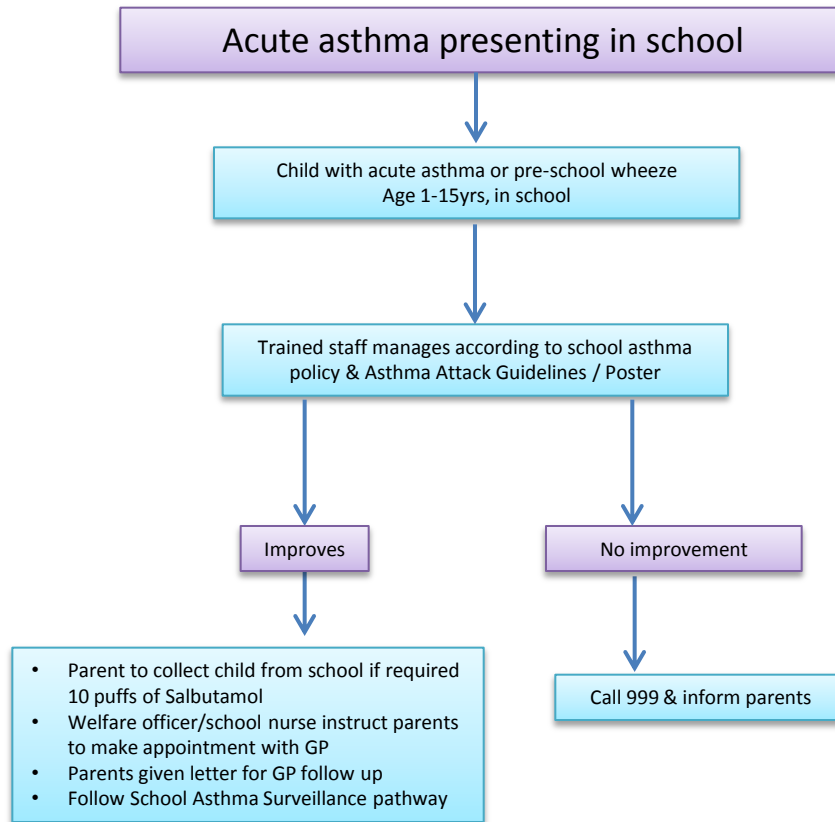
Box 4: Obesity management

- Health visitors
- Parents can self referral to Mend/Fit Teens club
- Referral to hospital dieticians

Box 5: Useful websites ⁽⁷⁾

- <http://www.itchysneezywheezy.co.uk/>
- <https://www.asthma.org.uk/>





Acute asthma presenting in primary care (GP practice)

Child with acute asthma or pre-school wheeze
Age 1-15yrs , attends GP practice

Manage according to [BTS](#) and [NICE](#) guidance
Use EMIS Template ⁽⁴⁾

Improves and safe
to discharge home

No improvement
Refer to Paediatric A&E/ 999

Structured discharge review (Box 1) before
discharge home to identify modifiable risk factors
for repeat attack
Use EMIS Template ⁽⁴⁾

Arrange local asthma
review within 6 weeks
to check asthma
under control

**Consider referral to Hillingdon Paediatric Asthma Team
(See box 2)**

Box 1: Structured review before discharge

- Assessment of wheeze triggers ⁽⁶⁾
- Assessment of control/ asthma control test ^{(15) (28)}
- Review inhaler technique^{(13) (28)}
- Review adherence⁽²⁸⁾
- Step up treatment using BTS guideline
- Provide asthma self-management education⁽²⁸⁾
- Provide a written asthma action plan⁽²⁷⁾
- Advise on home peak flow monitoring (Age >6 years)

Box 2: Refer patients to Hillingdon Paediatric Asthma Team if:

- Unable to arrange GP follow up in 2 working days
- 3rd acute asthma presentation within last 12 months
- School absence due to asthma/wheeze
- Symptomatic between acute episodes
- Not controlled on BTS step 3
- Known asthmatic and never had a GP review
- Life threatening asthma/ difficult asthma/ psychosocial risk factors/
other specific concern
- Fax 01895 279901/ Email

Acute asthma presenting to the Urgent Care Centre

Child with acute asthma or pre-school wheeze
Age 1-15yrs , attends GP practice

Manage according to [BTS](#) and [NICE](#) guidance
Use EMIS Template ⁽⁴⁾

Improves and safe
to discharge home

No improvement
Refer to Paediatric A&E

Structured discharge review (Box 1) before
discharge home to identify modifiable risk factors
for repeat attack
Use EMIS Template ⁽⁴⁾

Patient Champion/Health connector
arranges primary care follow up
within 2 working days ⁽¹⁶⁾

Consider referral to Hillingdon Paediatric Asthma Team
(See box 2)

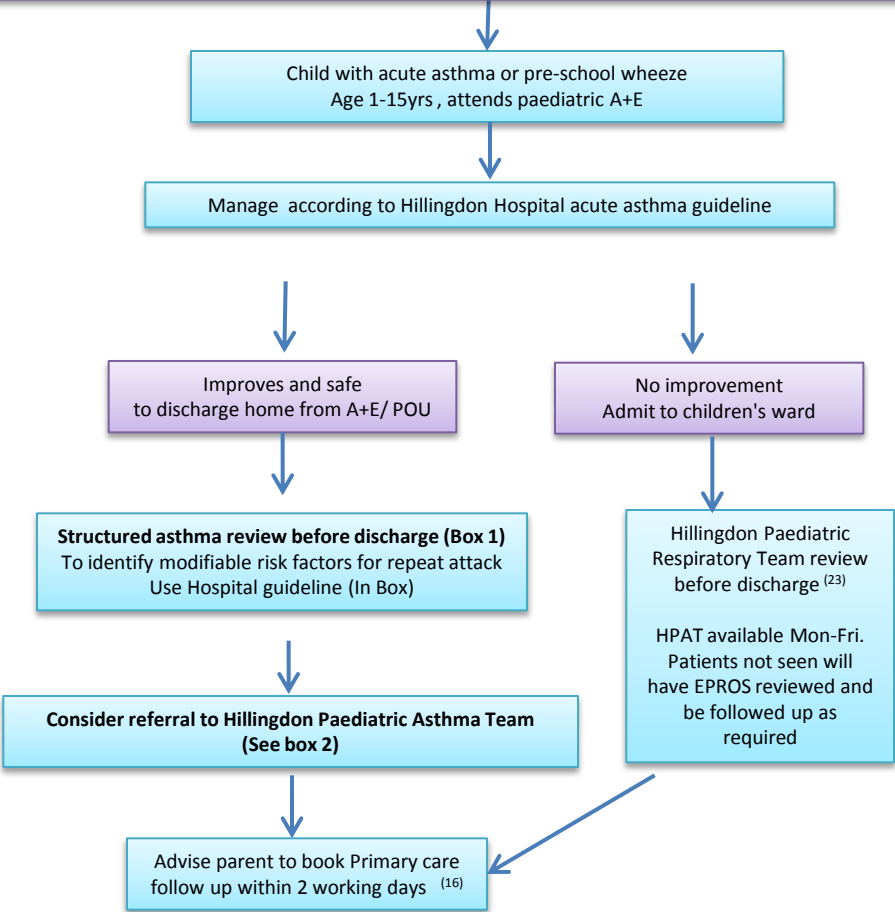
Box 1: Structured review before discharge

- Assessment of wheeze triggers ⁽⁶⁾
- Assessment of control/ asthma control test ^{(15) (28)}
- Review inhaler technique^{(13) (28)}
- Review adherence⁽²⁸⁾
- Step up treatment using BTS guideline
- Provide asthma self-management education⁽²⁸⁾
- Provide a written asthma action plan⁽²⁷⁾
- Advise on home peak flow monitoring (Age >6 years)

Box 2: Refer patients to Hillingdon Paediatric Asthma Team if:

- Unable to arrange GP follow up in 2 working days
- 3rd acute asthma presentation within last 12 months
- School absence due to asthma/wheeze
- Symptomatic between acute episodes
- Not controlled on BTS step 3
- Known asthmatic and never had a GP review
- Life threatening asthma/ difficult asthma/ psychosocial risk factors/
other specific concern
- Fax 01895 279901/ Email

Acute asthma presenting to the Hospital



- Box 1: Structured review before discharge**
- Assessment of wheeze triggers⁽⁶⁾
 - Assessment of control/ asthma control test^{(15) (28)}
 - Review inhaler technique^{(13) (28)}
 - Review adherence⁽²⁸⁾
 - Step up treatment using BTS guideline
 - Provide asthma self-management education⁽²⁸⁾
 - Provide a written asthma action plan⁽²⁷⁾
 - Advise on home peak flow monitoring (Age >6 years)

- Box 2: Refer patients to Hillingdon Paediatric Asthma Team if:**
- Unable to arrange GP follow up in 2 working days
 - 3rd acute asthma presentation within last 12 months
 - School absence due to asthma/wheeze
 - Symptomatic between acute episodes
 - Not controlled on BTS step 3
 - Known asthmatic and never had a GP review
 - Life threatening asthma/ difficult asthma/ psychosocial risk factors/ other specific concern
 - Fax 01895 279901/ Email

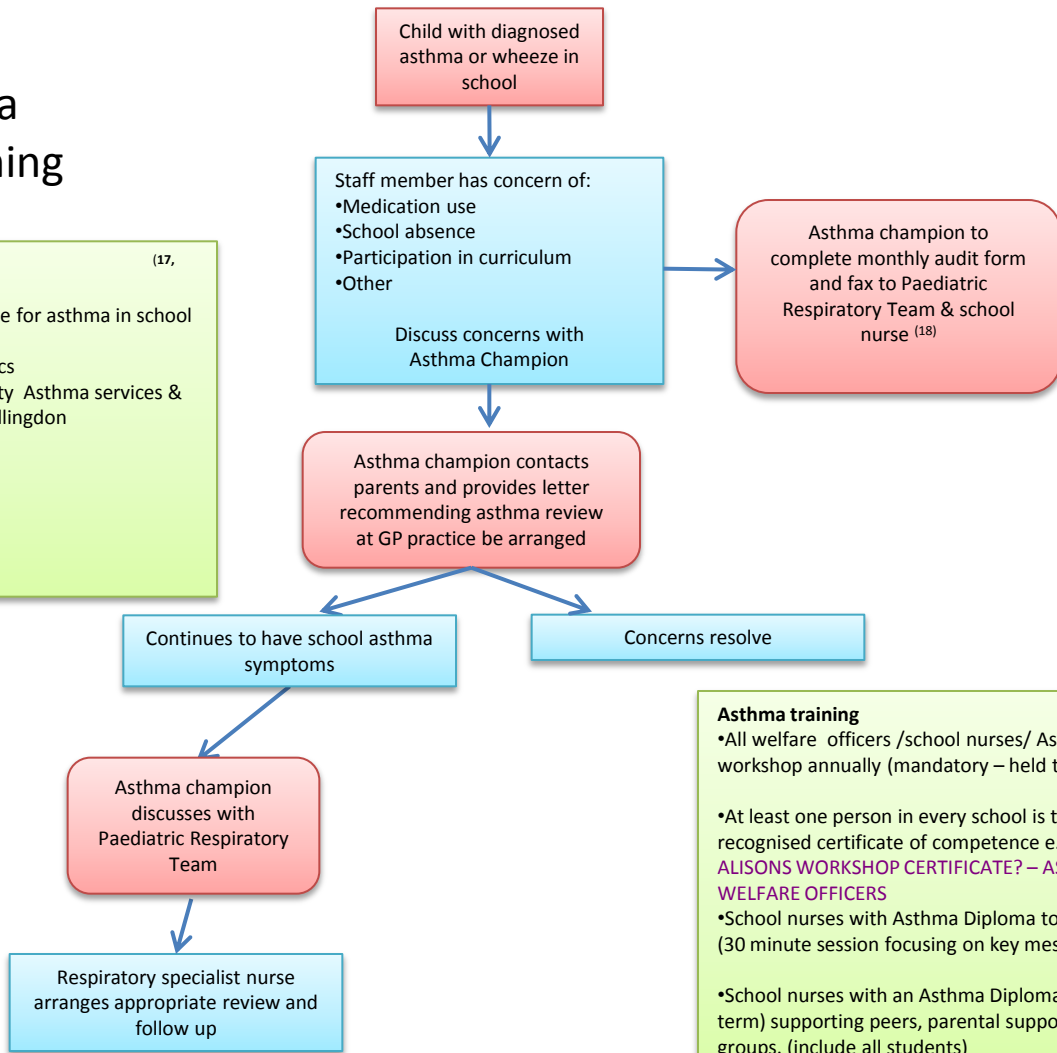
School asthma liaison & training

Asthma Friendly School (17, 18)

- Named Asthma Champion – responsible for asthma in school
- Register of all known asthmatics
- Management plan for known asthmatics
- Asthma Champion links with community Asthma services & attends Annual Asthma Workshop in Hillingdon
- Clear asthma policy
- Accessible inhalers
- Annual training for staff
- Display of emergency plan
- Emergency inhalers
- Annual asthma audit

Asthma Champion

- Named lead responsible & accountable for asthma
- Delivers London’s Ambitions for Asthma including: proactive, accessible care & co-ordinated care
- Attends asthma training workshop annually



Asthma training

- All welfare officers /school nurses/ Asthma Champions to attend asthma workshop annually (mandatory – held twice yearly by specialist team)
- At least one person in every school is trained in managing asthma (i.e. holds a recognised certificate of competence e.g. asthma diploma) – **COULD THIS BE ALISONS WORKSHOP CERTIFICATE? – ASTHMA DIPLOMA NOT AVAILABLE FOR WELFARE OFFICERS**
- School nurses with Asthma Diploma to provide asthma training to entire school (30 minute session focusing on key messages)
- School nurses with an Asthma Diploma to run Asthma education sessions (every term) supporting peers, parental support, access to secondary schools, focus groups. (include all students)

Community paediatric asthma clinic pathway

